

Power strapping for maximum packaging productivity

Signode® power strapping machines reduce labor while increasing the productivity and efficiency of packaging operations.

There are three basic types of power strapping machines: semi-automatic, automatic and operatorless.

Semiautomatic

The operator positions the package, places the strap around it, and inserts the strap into the lower chute, initiating the tensioning



Semiautomatic strap application.

sequence. After the machine tensions, seals and cuts the strap, the operator removes the package. These machines are simple and extremely flexible for diverse package shapes and sizes.

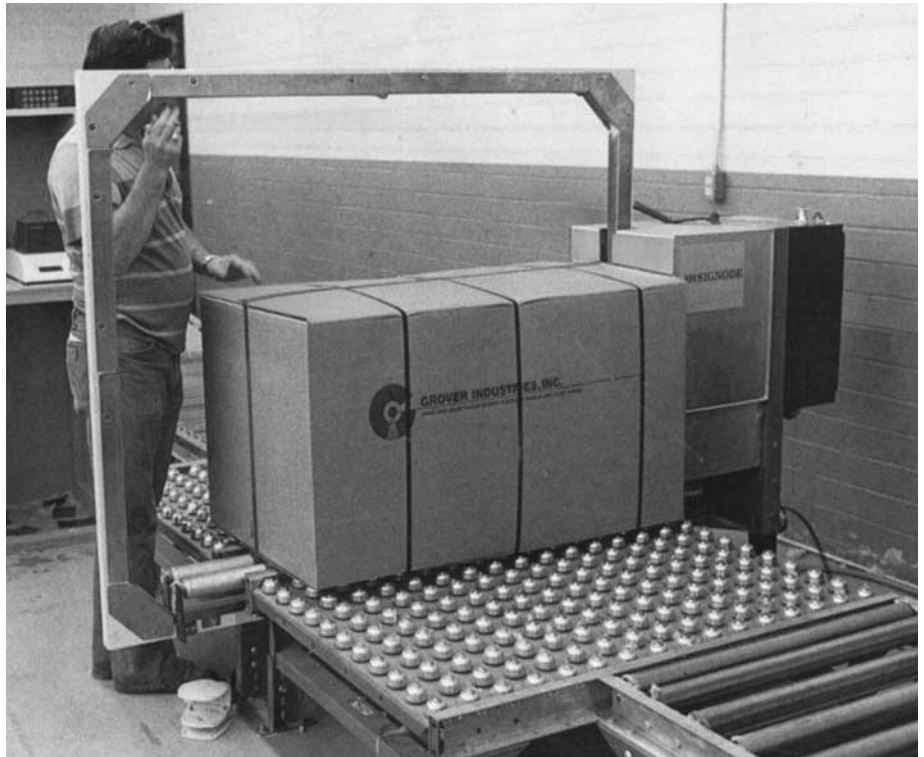
Automatic

In an automatic system, the operator places the package against the strapping head and initiates the strapping cycle by pressing a button or foot switch. When the cycle is completed, the operator

moves the package to apply additional straps, if necessary.

Operatorless

Signode operatorless power strapping machines represent the ultimate in strapping automation. They automatically apply, tension, seal and cut the strap without an operator. Normally used with powered conveyors, most Signode closed-chute strapping machines can be made operatorless.



Automatic strap application

Operatorless power strapping system

Plastic/Power strap feeders

Power strap feeders for economical high-speed strapping

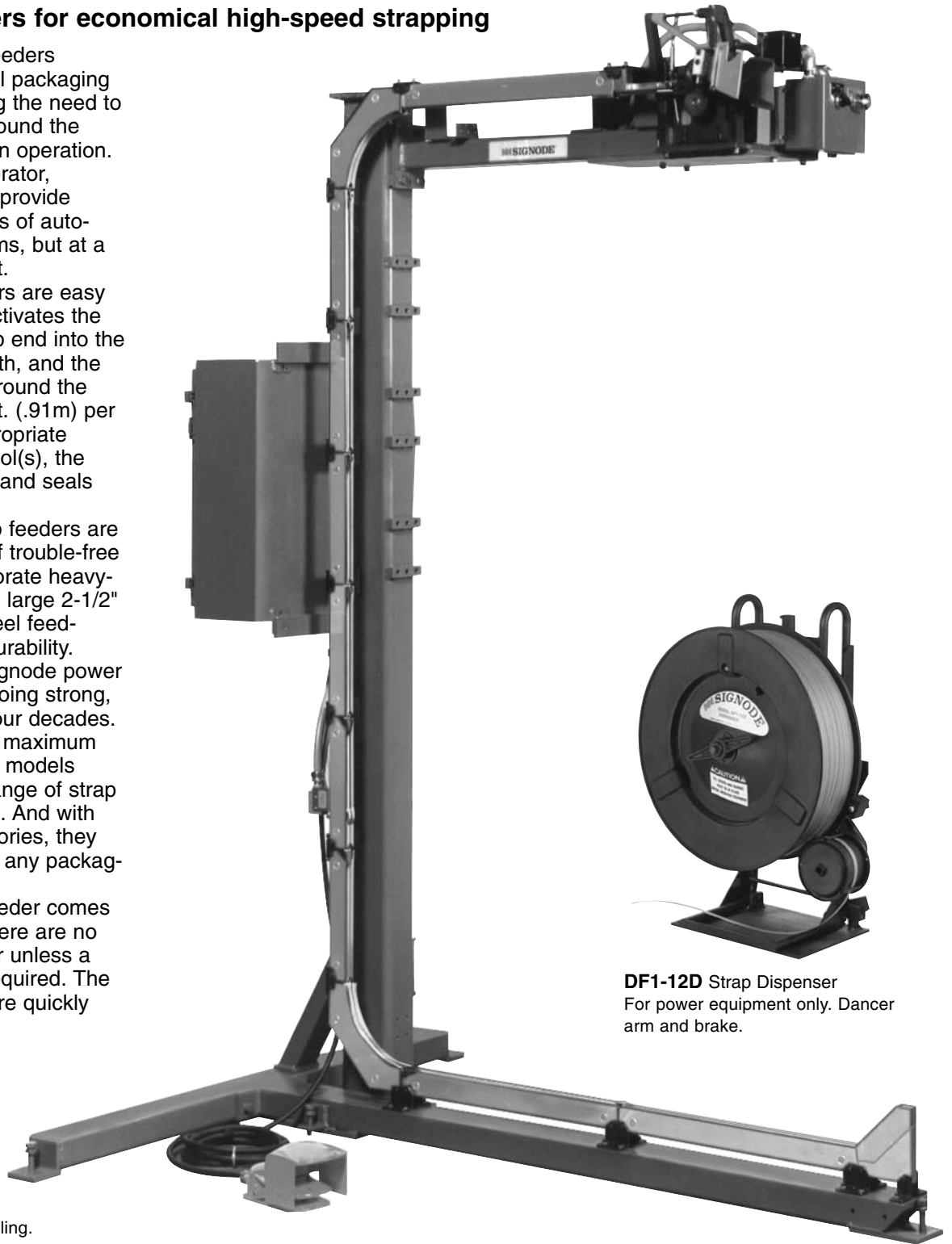
Signode power strap feeders (PSFs) improve manual packaging efficiency by eliminating the need to hand feed strapping around the load—often a two-person operation. Requiring only one operator, powered strap feeders provide many of the advantages of automatic packaging systems, but at a considerably lower cost.

Signode strap feeders are easy to use. The operator activates the feeder, inserts the strap end into the feeder's large bell mouth, and the PSF cycles the strap around the load at the rate of 3.6 ft. (.91m) per second. Using the appropriate strapping application tool(s), the operator then tensions and seals the strapping.

Signode power strap feeders are built to provide years of trouble-free operation. They incorporate heavy-duty 1/4 hp motors and large 2-1/2" (63.5mm) hardened steel feed-wheels for maximum durability. Some of the earliest Signode power strap feeders are still going strong, even after more than four decades.

Designed to provide maximum versatility, the standard models operate with a broad range of strap widths and thicknesses. And with the appropriate accessories, they can be fitted for almost any packaging application.

Each power strap feeder comes as a packaged unit. There are no individual parts to order unless a special installation is required. The few component parts are quickly and easily assembled.



DF1-12D Strap Dispenser
For power equipment only. Dancer arm and brake.

PSF-2

Large loads. Side or top sealing.

Power strap feeder package specifications

Power Strap Feeder Model	Strap Size	Maximum Package Size			
		High		Front to back	
		inch	mm	inch	mm
PSF-2	All 10.5 and 12 mm plastic strapping	76	1930	48	1219

Power strap feeder accessories

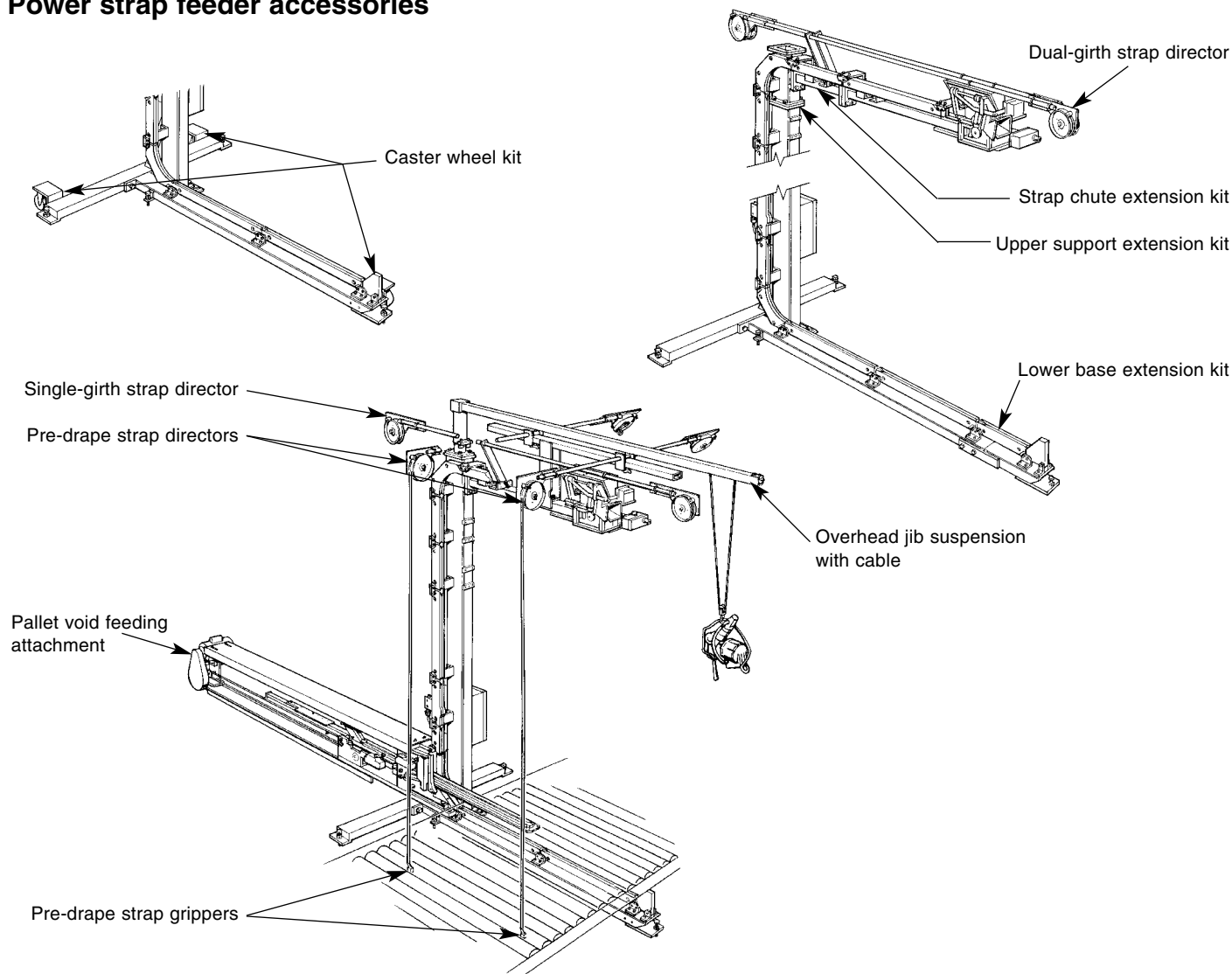


Table-Tyer strapping machine

Now the benefits of plastic strapping are available to cost-conscious shippers

The low-cost Table-Tyer is the ideal plastic strapping system for low to moderate volume shippers. It can help improve packaging productivity by reducing the labor and material costs associated with other methods of securement. And the Table-Tyer is equally efficient for strapping cartons, bundles—even coiled products.

The Table-Tyer applies low-cost Empax™ polypropylene strapping. You select the strap tension and length.

Specifications

Package Size	3-1/2" W x 1-1/2" H (standard)
Minimum	2" W x 1-1/2" H (with small package option)
Strapping	6mm, 9mm or 12mm Empax
Strap Tension	2 to 100 lbs. (.9 to 45.4 kg)
Power Requirements	120V, 60Hz, Single phase
Weight	168 lbs. (76 kg)

